



Scan for video installation

or visit www.crhandrail.com/install



Extension Installation Guide*

Time Required*

60 Minutes

Tools Required*

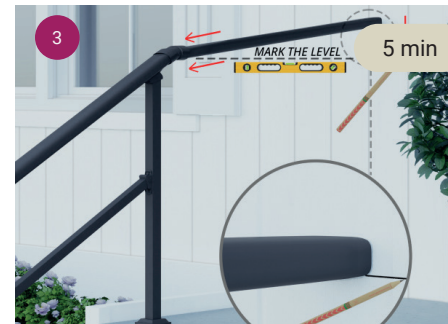
Drill Gun + Leveler + Abrasive Saw



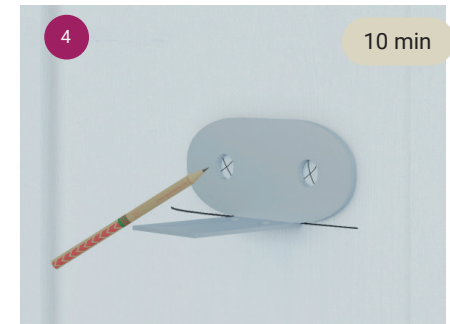
Remove the top rail end cap, and insert the adjustable connector.



For the top rail, measure from inside connector to wall. For middle rail, measure from post to wall. Cut the measured length minus 1/4" for both rail.



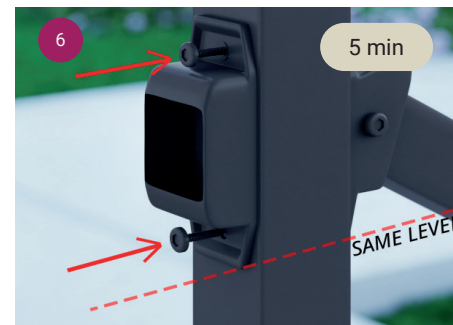
Insert the top rail into the connector, bring it down to horizontal position (use a leveler) and mark the position of the bottom of the rail on the wall with a pencil.



Position the wall bracket (aligned with marking) and mark the 2 holes with a pencil. Next, drill and secure it by inserting screws (see 'Drilling Guide' on the other side).



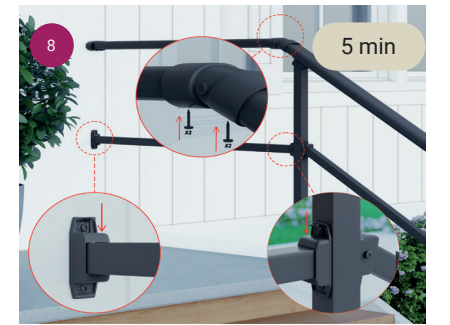
Insert the top rail, slide the wall connection cover into the rail (thin side facing in) and let the handrail rest horizontally on the wall bracket. Now, insert two self-drilling screws through the wall bracket and into the handrail to secure it in place.



For the middle rail, position the bracket directly opposite the handrail's middle railing bracket. Secure it with two self-drilling screws.



Insert the middle rail into the bracket, mark the horizontal position on the wall (use a leveler) and install the wall bracket for the middle rail (for drilling instructions, please refer to the 'Drilling Guide' on the other side).



Secure rail using self-drilling screws provided. For top rail connector, use 2 screws on each end on the bottom side. For the middle rail bracket, use 1 screw on the narrow side. Screw in tight enough where the screw-head meets the metal.

Attachment Drilling Guide

Got an Issue? We can help!

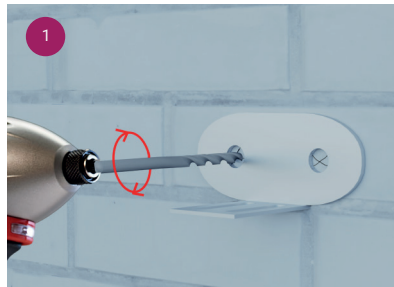


Call or Text (with Photos)
(800) 420-0432

WhatsApp
(775) 324-8877



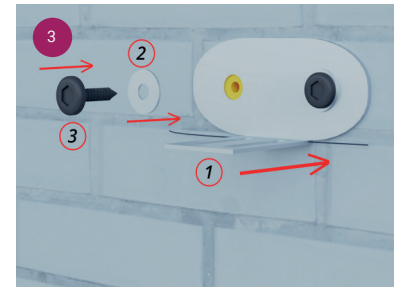
Masonry



Using the provided masonry drill-bit to drill holes into the two spots previously marked with your pencil.

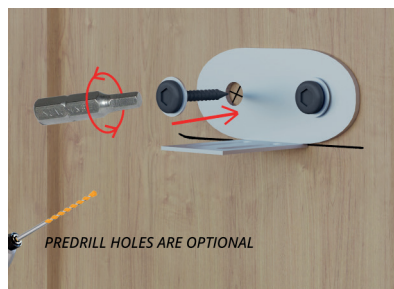


Hammer in the provided masonry wall anchors.



Using the screws provided with the masonry wall anchors, put a washer onto the screw, and secure the bracket in place.

Wood



Using the screws provided with the masonry wall anchors (but without using the anchor), put a washer onto the screw, and secure the bracket in place.

*Means and Methods Disclaimer

In no event shall CR Handrail have any responsibility, control over, charge of, responsibility, or liability for the means, methods, techniques, sequences, or procedures, or for safety precautions in connection with the installation of the railing, since these are solely CM/GC's, Subcontractor's, and Owner's responsibilities.

Each installation site differs widely ranging from the construction & condition of attachment points, local building & safety code, local construction code, and local means & methods.

CR Handrail's installation guide (whether it be in text, illustration, video or in support discussion) constitute for ideal installation condition. There is no ideal installation in real life. There is no substitution for consulting a local licensed contractor, architect, engineer, or code inspector.

CR Handrail's installation hardware and tools are provided as building material and does NOT constitute as the specific nor final installation hardware. Once again, you and your installer must make the final on-site determination to the specific means and methods of installation appropriate for your job site & requirements.

Following CR Handrail's instruction does NOT constitute as proper installation as you and your installer must make the final means & method determination. **Improper installation can lead to failure of rail system which can cause serious injury or death.**